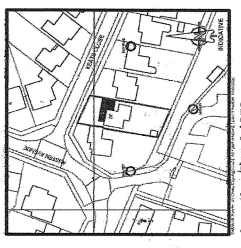
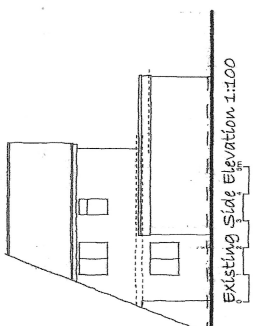
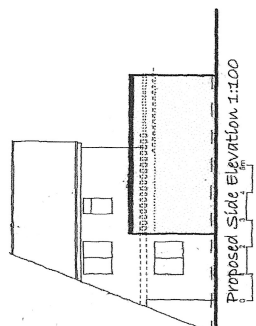
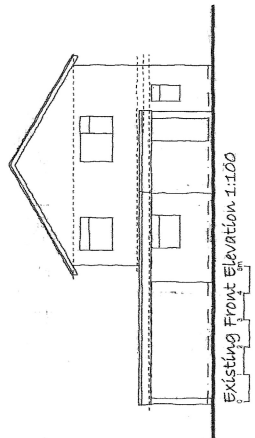
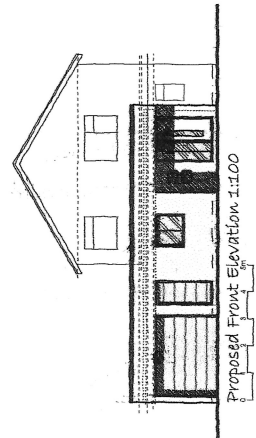
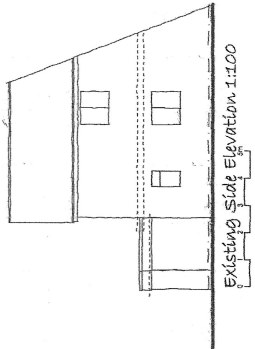
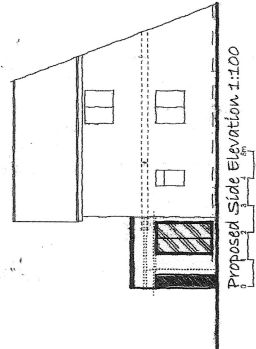


**Important Notes**

IT IS THE SOLE RESPONSIBILITY OF THE BUILDING OWNER TO OBTAIN ALL NECESSARY PERMITS AND APPROVALS FROM THE LOCAL AUTHORITY AND TO COVER ALL COSTS INCURRED THROUGH NEIGHBOURHOOD DISPUTES. THE ARCHITECT'S RESPONSIBILITY IS LIMITED TO THE DESIGN OF THE BUILDING AND TO THE PREPARATION OF THE DRAWINGS. THE ARCHITECT DOES NOT ACCEPT RESPONSIBILITY FOR ANY DAMAGE TO ADJACENT PROPERTIES OR FOR ANY DELAY TO THE PROJECT CAUSED BY THE FAILURE OF ANY PARTY TO COMPLY WITH THE REQUIREMENTS OF THE BUILDING REGULATIONS OR ANY OTHER STATUTE. THE ARCHITECT'S LIABILITY IS LIMITED TO THE DESIGN OF THE BUILDING AND TO THE PREPARATION OF THE DRAWINGS. THE ARCHITECT DOES NOT ACCEPT RESPONSIBILITY FOR ANY DAMAGE TO ADJACENT PROPERTIES OR FOR ANY DELAY TO THE PROJECT CAUSED BY THE FAILURE OF ANY PARTY TO COMPLY WITH THE REQUIREMENTS OF THE BUILDING REGULATIONS OR ANY OTHER STATUTE.

**BUILDING REGULATION EXEMPTION ONLY**  
 DRAWINGS TO BE MADE IN CONJUNCTION WITH STRUCTURAL ENGINEER DETAILS. THE ARCHITECT DOES NOT ACCEPT RESPONSIBILITY FOR THE DESIGN OF THE STRUCTURE OR FOR THE DESIGN OF THE FOUNDATIONS OR FOR THE DESIGN OF THE ROOF OR FOR THE DESIGN OF THE CLADDING OR FOR THE DESIGN OF THE GLAZING OR FOR THE DESIGN OF THE MECHANICAL AND ELECTRICAL SERVICES OR FOR THE DESIGN OF THE HEATING AND VENTILATION SYSTEMS OR FOR THE DESIGN OF THE SANITARY FITTINGS OR FOR THE DESIGN OF THE PLUMBING OR FOR THE DESIGN OF THE PAINTWORK OR FOR THE DESIGN OF THE FLOORING OR FOR THE DESIGN OF THE JOINERY OR FOR THE DESIGN OF THE GLAZING OR FOR THE DESIGN OF THE MECHANICAL AND ELECTRICAL SERVICES OR FOR THE DESIGN OF THE HEATING AND VENTILATION SYSTEMS OR FOR THE DESIGN OF THE SANITARY FITTINGS OR FOR THE DESIGN OF THE PLUMBING OR FOR THE DESIGN OF THE PAINTWORK OR FOR THE DESIGN OF THE FLOORING OR FOR THE DESIGN OF THE JOINERY OR FOR THE DESIGN OF THE GLAZING OR FOR THE DESIGN OF THE MECHANICAL AND ELECTRICAL SERVICES OR FOR THE DESIGN OF THE HEATING AND VENTILATION SYSTEMS OR FOR THE DESIGN OF THE SANITARY FITTINGS OR FOR THE DESIGN OF THE PLUMBING OR FOR THE DESIGN OF THE PAINTWORK OR FOR THE DESIGN OF THE FLOORING OR FOR THE DESIGN OF THE JOINERY OR FOR THE DESIGN OF THE GLAZING OR FOR THE DESIGN OF THE MECHANICAL AND ELECTRICAL SERVICES OR FOR THE DESIGN OF THE HEATING AND VENTILATION SYSTEMS OR FOR THE DESIGN OF THE SANITARY FITTINGS OR FOR THE DESIGN OF THE PLUMBING OR FOR THE DESIGN OF THE PAINTWORK OR FOR THE DESIGN OF THE FLOORING OR FOR THE DESIGN OF THE JOINERY OR FOR THE DESIGN OF THE GLAZING OR FOR THE DESIGN OF THE MECHANICAL AND ELECTRICAL SERVICES OR FOR THE DESIGN OF THE HEATING AND VENTILATION SYSTEMS OR FOR THE DESIGN OF THE SANITARY FITTINGS OR FOR THE DESIGN OF THE PLUMBING OR FOR THE DESIGN OF THE PAINTWORK OR FOR THE DESIGN OF THE FLOORING OR FOR THE DESIGN OF THE JOINERY OR FOR THE DESIGN OF THE GLAZING OR FOR THE DESIGN OF THE MECHANICAL AND ELECTRICAL SERVICES OR FOR THE DESIGN OF THE HEATING AND VENTILATION SYSTEMS OR FOR THE DESIGN OF THE SANITARY FITTINGS OR FOR THE DESIGN OF THE PLUMBING OR FOR THE DESIGN OF THE PAINTWORK OR FOR THE DESIGN OF THE FLOORING OR FOR THE DESIGN OF THE JOINERY OR FOR THE DESIGN OF THE GLAZING OR FOR THE DESIGN OF THE MECHANICAL AND ELECTRICAL SERVICES OR FOR THE DESIGN OF THE HEATING AND VENTILATION SYSTEMS OR FOR THE DESIGN OF THE SANITARY FITTINGS OR FOR THE DESIGN OF THE PLUMBING OR FOR THE DESIGN OF THE PAINTWORK OR FOR THE DESIGN OF THE FLOORING OR FOR THE DESIGN OF THE JOINERY OR FOR THE DESIGN OF THE GLAZING OR FOR THE DESIGN OF THE MECHANICAL AND ELECTRICAL SERVICES OR FOR THE DESIGN OF THE HEATING AND VENTILATION SYSTEMS OR FOR THE DESIGN OF THE SANITARY FITTINGS OR FOR THE DESIGN OF THE PLUMBING OR FOR THE DESIGN OF THE PAINTWORK OR FOR THE DESIGN OF THE FLOORING OR FOR THE DESIGN OF THE JOINERY OR FOR THE DESIGN OF THE GLAZING OR FOR THE DESIGN OF THE MECHANICAL AND ELECTRICAL SERVICES OR FOR THE DESIGN OF THE HEATING AND VENTILATION SYSTEMS OR FOR THE DESIGN OF THE SANITARY FITTINGS OR FOR THE DESIGN OF THE PLUMBING OR FOR THE DESIGN OF THE PAINTWORK OR FOR THE DESIGN OF THE FLOORING OR FOR THE DESIGN OF THE JOINERY OR FOR THE DESIGN OF THE GLAZING OR FOR THE DESIGN OF THE MECHANICAL AND ELECTRICAL SERVICES OR FOR THE DESIGN OF THE HEATING AND VENTILATION SYSTEMS OR FOR THE DESIGN OF THE SANITARY FITTINGS OR FOR THE DESIGN OF THE PLUMBING OR FOR THE DESIGN OF THE PAINTWORK OR FOR THE DESIGN OF THE FLOORING OR FOR THE DESIGN OF THE JOINERY OR FOR THE DESIGN OF THE GLAZING OR FOR THE DESIGN OF THE MECHANICAL AND ELECTRICAL SERVICES OR FOR THE DESIGN OF THE HEATING AND VENTILATION SYSTEMS OR FOR THE DESIGN OF THE SANITARY FITTINGS OR FOR THE DESIGN OF THE PLUMBING OR FOR THE DESIGN OF THE PAINTWORK OR FOR THE DESIGN OF THE FLOORING OR FOR THE DESIGN OF THE JOINERY OR FOR THE DESIGN OF THE GLAZING OR FOR THE DESIGN OF THE MECHANICAL AND ELECTRICAL SERVICES OR FOR THE DESIGN OF THE HEATING AND VENTILATION SYSTEMS OR FOR THE DESIGN OF THE SANITARY FITTINGS OR FOR THE DESIGN OF THE PLUMBING OR FOR THE DESIGN OF THE PAINTWORK OR FOR THE DESIGN OF THE FLOORING OR FOR THE DESIGN OF THE JOINERY OR FOR THE DESIGN OF THE GLAZING OR FOR THE DESIGN OF THE MECHANICAL AND ELECTRICAL SERVICES OR FOR THE DESIGN OF THE HEATING AND VENTILATION SYSTEMS OR FOR THE DESIGN OF THE SANITARY FITTINGS OR FOR THE DESIGN OF THE PLUMBING OR FOR THE DESIGN OF THE PAINTWORK OR FOR THE DESIGN OF THE FLOORING OR FOR THE DESIGN OF THE JOINERY OR FOR THE DESIGN OF THE GLAZING OR FOR THE DESIGN OF THE MECHANICAL AND ELECTRICAL SERVICES OR FOR THE DESIGN OF THE HEATING AND VENTILATION SYSTEMS OR FOR THE DESIGN OF THE SANITARY FITTINGS OR FOR THE DESIGN OF THE PLUMBING OR FOR THE DESIGN OF THE PAINTWORK OR FOR THE DESIGN OF THE FLOORING OR FOR THE DESIGN OF THE JOINERY OR FOR THE DESIGN OF THE GLAZING OR FOR THE DESIGN OF THE MECHANICAL AND ELECTRICAL SERVICES OR FOR THE DESIGN OF THE HEATING AND VENTILATION SYSTEMS OR FOR THE DESIGN OF THE SANITARY FITTINGS OR FOR THE DESIGN OF THE PLUMBING OR FOR THE DESIGN OF THE PAINTWORK OR FOR THE DESIGN OF THE FLOORING OR FOR THE DESIGN OF THE JOINERY OR FOR THE DESIGN OF THE GLAZING OR FOR THE DESIGN OF THE MECHANICAL AND ELECTRICAL SERVICES OR FOR THE DESIGN OF THE HEATING AND VENTILATION SYSTEMS OR FOR THE DESIGN OF THE SANITARY FITTINGS OR FOR THE DESIGN OF THE PLUMBING OR FOR THE DESIGN OF THE PAINTWORK OR FOR THE DESIGN OF THE FLOORING OR FOR THE DESIGN OF THE JOINERY OR FOR THE DESIGN OF THE GLAZING OR FOR THE DESIGN OF THE MECHANICAL AND ELECTRICAL SERVICES OR FOR THE DESIGN OF THE HEATING AND VENTILATION SYSTEMS OR FOR THE DESIGN OF THE SANITARY FITTINGS OR FOR THE DESIGN OF THE PLUMBING OR FOR THE DESIGN OF THE PAINTWORK OR FOR THE DESIGN OF THE FLOORING OR FOR THE DESIGN OF THE JOINERY OR FOR THE DESIGN OF THE GLAZING OR FOR THE DESIGN OF THE MECHANICAL AND ELECTRICAL SERVICES OR FOR THE DESIGN OF THE HEATING AND VENTILATION SYSTEMS OR FOR THE DESIGN OF THE SANITARY FITTINGS OR FOR THE DESIGN OF THE PLUMBING OR FOR THE DESIGN OF THE PAINTWORK OR FOR THE DESIGN OF THE FLOORING OR FOR THE DESIGN OF THE JOINERY OR FOR THE DESIGN OF THE GLAZING OR FOR THE DESIGN OF THE MECHANICAL AND ELECTRICAL SERVICES OR FOR THE DESIGN OF THE HEATING AND VENTILATION SYSTEMS OR FOR THE DESIGN OF THE SANITARY FITTINGS OR FOR THE DESIGN OF THE PLUMBING OR FOR THE DESIGN OF THE PAINTWORK OR FOR THE DESIGN OF THE FLOORING OR FOR THE DESIGN OF THE JOINERY OR FOR THE DESIGN OF THE GLAZING OR FOR THE DESIGN OF THE MECHANICAL AND ELECTRICAL SERVICES OR FOR THE DESIGN OF THE HEATING AND VENTILATION SYSTEMS OR FOR THE DESIGN OF THE SANITARY FITTINGS OR FOR THE DESIGN OF THE PLUMBING OR FOR THE DESIGN OF THE PAINTWORK OR FOR THE DESIGN OF THE FLOORING OR FOR THE DESIGN OF THE JOINERY OR FOR THE DESIGN OF THE GLAZING OR FOR THE DESIGN OF THE MECHANICAL AND ELECTRICAL SERVICES OR FOR THE DESIGN OF THE HEATING AND VUSTEN AVENUE  
 KEAT'S CLOSE  
 BIN RISE  
 BIN RISE  
 INDICATIVE

Site Plan 1:500  
 Ordnance Survey, © Crown Copyright 2024. All rights reserved. Licence number 100022432



project  
**30 Keats Close**  
**Oliver's Battery**  
**Winchester**  
**Hampshire**

client  
**Mr & Mrs Gehring**

drawing  
**Proposed Alterations**

stage  
**Stage 1 - Survey**  
**Stage 2 - Design**

scale  
**1:100 & 1:50 @ A1**  
**April 2024**

job no.  
**3143/04\_01\_B**

The Design Loft, Silver Birch  
 Allington Lane  
 Southampton  
 Hampshire  
 SO9 3JG  
 T. 023 8049 9924  
 M. 07881 397261  
 E. info@mdtdesign.co.uk  
 W. www.mdtdesign.co.uk

